

North Somerset Council

REPORT TO THE CHILDREN AND YOUNG PEOPLE'S SERVICES POLICY AND SCRUTINY PANEL

DATE OF MEETING:	12 SEPTEMBER 2014
SUBJECT OF REPORT:	PERFORMANCE & FINANCIAL MONITORING
TOWN OR PARISH:	ALL
OFFICERS PRESENTING:	ASSISTANT DIRECTOR, STRATEGY, COMMISSIONING AND PERFORMANCE
KEY DECISION:	NO

RECOMMENDATION

The Panel is asked to:

Note the financial and performance information presented in the report and to comment on both areas for improvement and areas of good performance.

1. SUMMARY OF REPORT

The Children and Young People's Services Policy and Scrutiny Panel requested regular performance and financial management monitoring reports to help members evaluate the extent to which the Council and its partners are achieving key plans and objectives for children and young people's services and to provide appropriate challenge, praise and suggestions to improve performance.

The Council's Performance Management Framework includes a requirement for regular (at least quarterly) formal monitoring of our financial and performance position so that appropriate remedial action can be taken if needed.

The Panel's June 2014 meeting agreed the content of subsequent 2014/15 monitoring reports and this report presents trends in numbers of Children Looked After, children with a Child Protection Plan and Children in Need receiving support and safeguarding services. Early indications of GCSE and 'A' level results by school are also presented.

2. INSPECTION AND IMPROVEMENT

Worle Community School was inspected in June 2014 and was judged to be 'Good' for overall effectiveness, an improvement from its previous 'Satisfactory' judgement. All four sub-categories were also judged to be 'Good'. Key findings from the inspection report included:

- This is an improving school in which students are taught well. They make good progress over time, often from below average starting points.
- Although there was a dip in GCSE achievement in 2013, examination results in general have improved over the last few years. Current Year 11 students are on track to achieve good GCSE results and thus restore that upward trend.
- Teaching is typically good throughout the school. There are very effective systems in place to make sure that teachers continue to improve their skills.
- The behaviour of students is good and has improved since the last inspection because the expectations of them are higher. They are usually courteous and respectful to each other and to staff.
- Leadership is ambitious, forthright and determined. The strong focus on improving teaching and learning has enabled the school to move forward in making sure that all students can achieve well.
- Governors are very knowledgeable about how well the school is performing and their support and challenge make a significant contribution to school improvement.

The report stated the school was not yet 'Outstanding' because:

- There is not enough outstanding teaching. Teachers' marking and feedback to students are not always timely and detailed enough to help them make rapid progress. Sometimes teachers do not check that students have corrected mistakes and made the suggested improvements to their work.
- Levels of achievement are not always as high as they should be because teachers do not always use information about students' progress to set work at the right level of difficulty.

Mead Vale Community Primary School in Worle was inspected in May and was judged as 'Requires improvement', after having been an outstanding school previously. All four sub-categories were also judged as 'Requires improvement'. Key findings noted in the report included:

- Standards at the end of Year 6 in reading, writing and mathematics have fallen significantly in the years since the last inspection and in 2013 were below the national average.
- Teaching has not been good enough to make sure that all pupils make consistently good progress.
- The work planned by teachers for the more-able pupils is not always challenging enough.
- There are some incidents of poor behaviour, and when teaching fails to engage them, pupils can become restless and inattentive.

Strengths identified included:

- Under the effective leadership of the new headteacher and her team, pupils' progress and the quality of teaching are improving quickly.
- Teaching is increasingly good and some is outstanding.

3. KEY CORPORATE PERFORMANCE INDICATORS

The Council has revised its basket of Key Performance Indicators which are monitored quarterly by the Corporate Management Team and reported to members. There are now five key indicators for children's services and the quarter 1 performance against these key indicators is shown in Appendix 2.

One key indicator on pupil attainment is annual and performance for 3 of the remaining four indicators (75%) was better than their targets, with the fourth not being on target.

4. NUMBERS OF CHILDREN LOOKED AFTER

When a child becomes 'Looked After' the Council takes on a parenting role, either with the agreement of the parents or through a court order which gives the local authority a share of parental responsibility for that child. Children Looked After cease to be Looked After on reaching their 18th birthday, if they have not ceased previously. Trends in numbers Children Looked After are shown in Appendix 1.

Members are aware from previous reports that numbers of Looked After children increased sharply in 2012, rising from 231 on 31 March 2012 to 279 on 31 December 2012, an increase of 21%. This was partly due to a number of large sibling groups starting to be Looked After and also due to increases in the numbers of 0-4 year olds and 16 or 17 year olds starting to be Looked After. During the 3 years from June 2009 to June 2012 the number of Children Looked After had generally ranged from 220 to 240.

During 2013 there was a steady decrease in the number of Children Looked After to 204 on 31 December 2013, with relatively few children having started to be Looked After. Since then there has been a gradual, but steady increase in the number of children looked after and at the end of July 2014 the total was 234. The target for March 2015 is for there to be 210 Children Looked After. The reasons for increases and decreases in numbers of Children Looked After are complex. The Assistant Director and Service Leaders are tightly monitoring all requests for a child to be Looked After. Every Child Looked After is being reviewed to ensure that care plans are being progressed and plans to return children home wherever possible are being actioned.

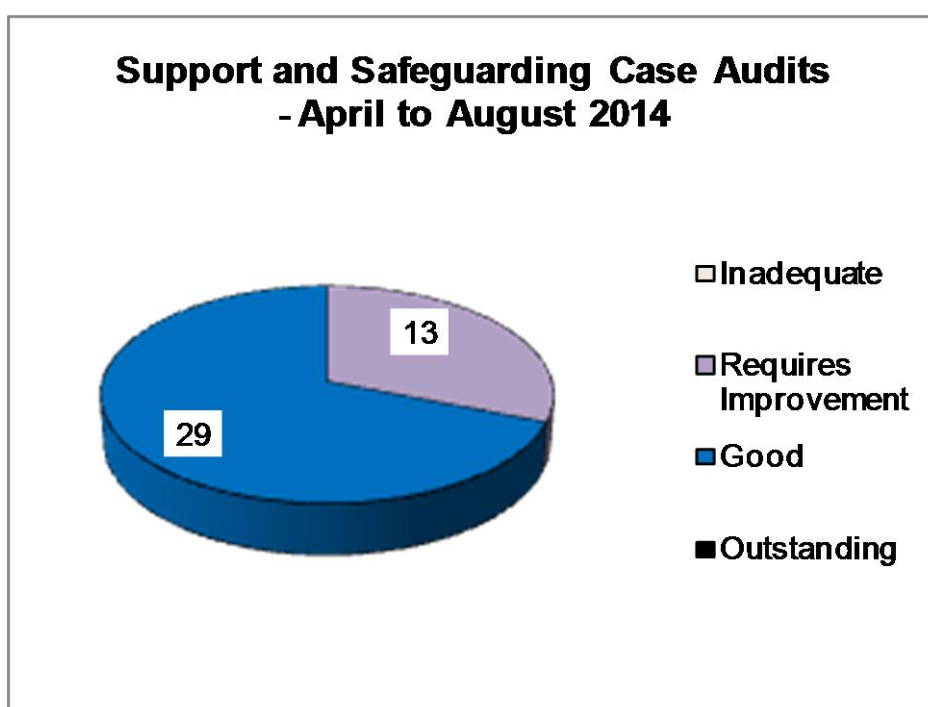
5. FINANCIAL MONITORING

The CYPS Financial Monitoring Commentary up to 30 June 2014 is attached at Appendix 5. The Directorate is projecting to overspend its budget in 2014/15 by £1,528K (5.72%), mainly due to the costs of placements for Children Looked After and medium term financial plan savings not being delivered at the pace previously anticipated.

6. CASE AUDITS

Case audit is an important tool to ensure quality and consistency and promote a culture of learning and improvement. There is a programme of regular case audit undertaken by managers in the Support and Safeguarding Branch, which was attached to a previous report and members of the Directorate Leadership Team (DLT) audit a case, chosen at random, monthly as a routine part of the Leadership Team meeting. In addition, the North Somerset Safeguarding Children Board undertakes a programme of multi agency audits.

The audit process within the Support and Safeguarding Branch involves grading the cases sampled and a summary of the gradings for 42 cases is shown in the chart below. Overall, 69% of these case audits resulted in a good grading. The findings from these case audits are fed back to teams and individual workers as appropriate.



7. WHAT ARE THE TRENDS IN NUMBERS OF CHILDREN LOOKED AFTER, CHILDREN WITH A CHILD PROTECTION PLAN AND CHILDREN IN NEED RECEIVING SUPPORT AND SAFEGUARDING SERVICES?

Trends in numbers of children who are Looked After, children with a Child Protection (CP) plan and other Children in Need can be found in Appendix 3.

Following on from item 4, the number of Children Looked After has increased during 2014, but the rate is still lower than the England average. However, the rate per 10,000 0-17 year olds is significantly above the average rate of North Somerset's family of similar authorities.

The number of children with a Child Protection Plan has decreased recently and the rate per 10,000 0-17 year olds is now significantly lower than both the average of North Somerset's group of similar authorities and the England average. The number

of families involved with the child protection system tends to fluctuate over time less than the number of children. There are usually between 40 and 70 families involved in the child protection system in North Somerset and the total is currently within that range.

The number of Children in Need who are not Looked After and do not have a CP plan increased recently and this is likely to be partly due to a number of children no longer having a child protection plan and having a Child in Need plan instead.

8. INDICATIVE GCSE AND 'A' LEVEL RESULTS BY SCHOOL

Appendix 4 shows the results collected on results day from each relevant school in North Somerset, with a breakdown of different measures. Key points are listed below.

GCSEs

The headline statistic of the percentage of pupils who achieved 5+ A*-C GCSEs or equivalent, including English and Maths GCSEs, has increased by 2.3% to 60.2% in North Somerset, after decreasing by 0.9% in 2013. This 2014 percentage is 1.6% better than the England average for 2013.

Seven secondary schools have shown increases in this statistic and three decreases. Backwell School increased by 19 percentage points to 81%, Nailsea School increased by 13 percentage points and Hans Price Academy by 7 percentage points. Clevedon School decreased by 8 percentage points and Broadoak College by 7 percentage points, with 41% of Broadoak pupils achieving 5+ A*-C GCSEs including English and maths.

Overall, 94.0% of pupils in North Somerset achieved 5+ A*-G GCSEs, ranging from 100% in Backwell School to 79% in Hans Price Academy. Across North Somerset, 21.6% of pupils achieved the English Baccalaureate, an increase of 2.3% compared to 2013 and half of Backwell School's pupils achieved this standard.

In North Somerset, the percentage of pupils gaining an A*-C in English increased by 3.6% to 70.8%, which is above the England 2013 average of 66%. Early indications are that the England average for English A*-C has decreased this year. The percentage of pupils achieving an A*-C in maths has increased by 3.3% in North Somerset to 71.3%, similar to the 2013 England average of 71.2%. The percentage of pupils achieving an A*-C in a modern foreign language increased by 5.4% and for humanities the percentage increase was 6.8%.

Indicative information about Levels of Progress showed that 70.9% of pupils made 3+ levels of progress in English this year, above the England average for 2013 of 70.1%. Backwell School, Churchill Academy and PCSA had over 80% of their pupils making 3+ levels of progress. Backwell School, Churchill Academy and Nailsea School all had 40% or more of their pupils making 4+ levels of progress in English. For maths, only Backwell School had over 80% of pupils making 3+ levels of progress or over 40% of pupils making 4+ levels of progress. In North Somerset as a whole, 68.7% of pupils made 3+ levels of progress in maths, 1.9% below the England average for 2013.

'A' Levels

Nationally, A level results have dipped slightly across most measures and the same is true in the North Somerset indicative figures. Weston College and Clevedon School have bucked the trend, with improvements this year. The number of A level entries at Weston College decreased by almost 40% this year, due to a move to apprenticeships and the Weston College percentage of entries achieving A*-B grades increased to 60.5%, 8.9% higher than the next highest school on this measure. (Weston College's figures may change slightly due to a few results not being able to be included on results day.)

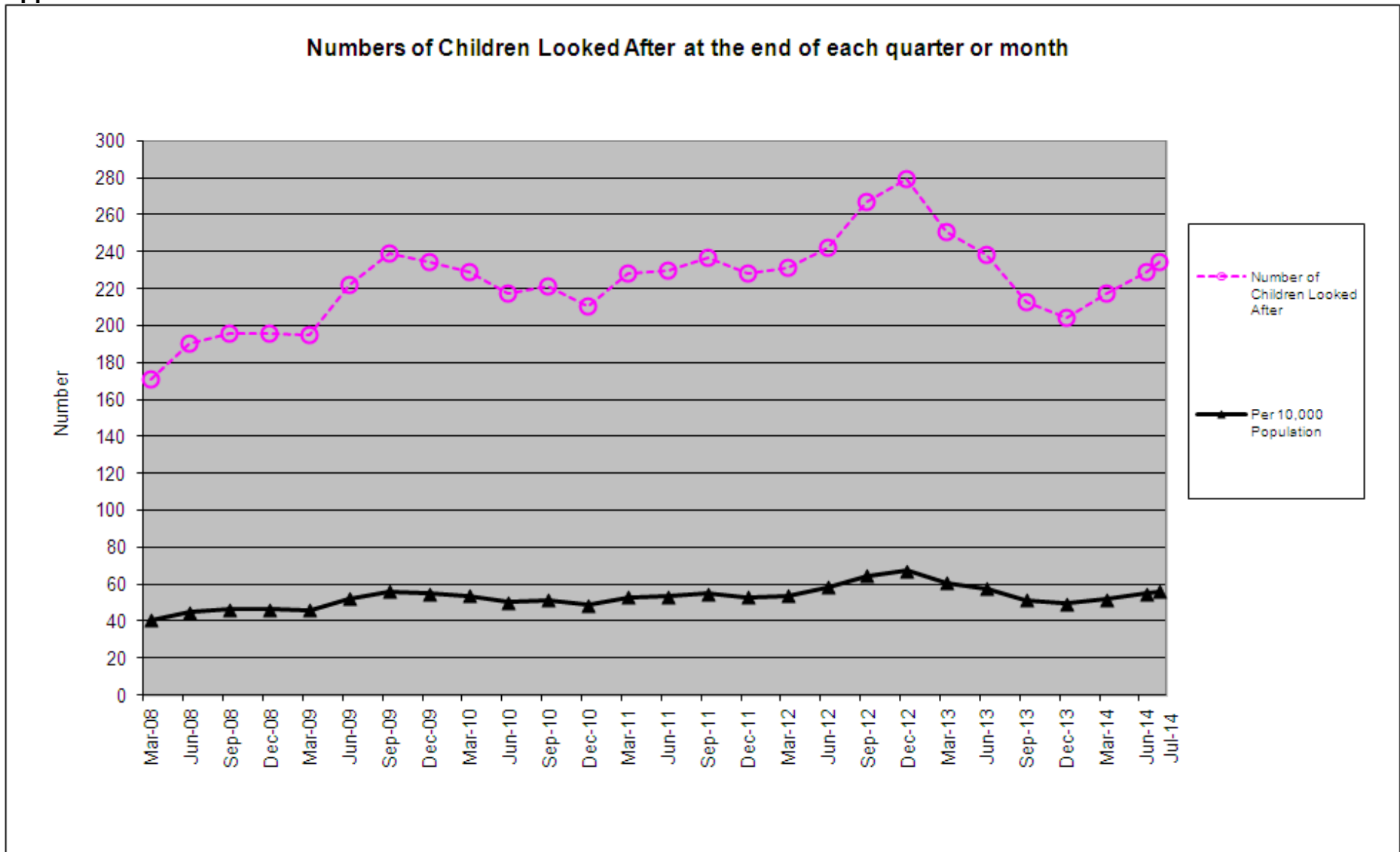
Clevedon School improved in 2014, compared to a disappointing 2013 set of results. The percentage of entries achieving A*-B grades increased by 5.4% to 45.8% in 2014.

Churchill Academy and Sixth Form's results deteriorated, but were still the best in North Somerset for the percentages of both A*-C and A*-E grades and were second after Weston College for the percentage of A*-B grades and Average Point Score per entry.

Authors

Malcolm Lane, Management Information Manager and Trevor Isaac, Service Accountancy and Development Manager

Appendix 1

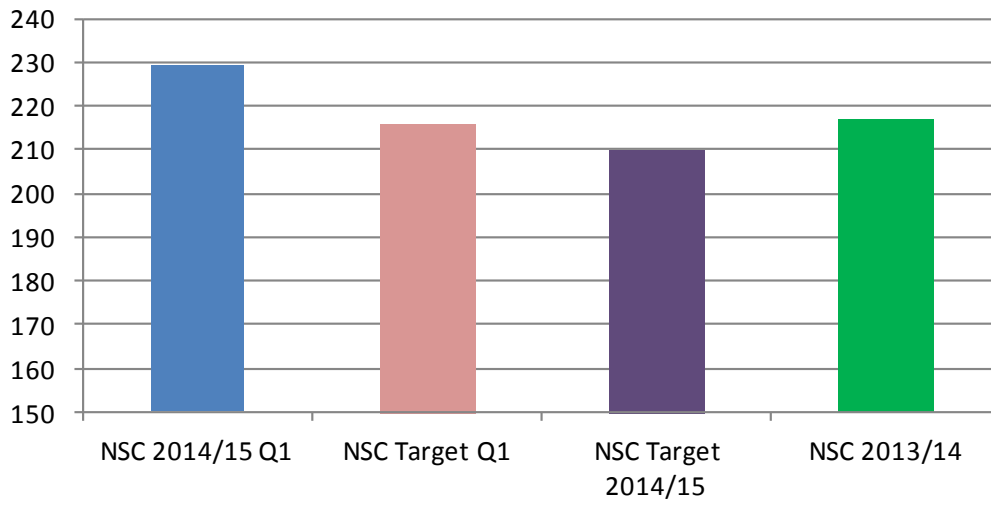


APPENDIX 2 - Performance summary for Key Corporate Performance Indicators

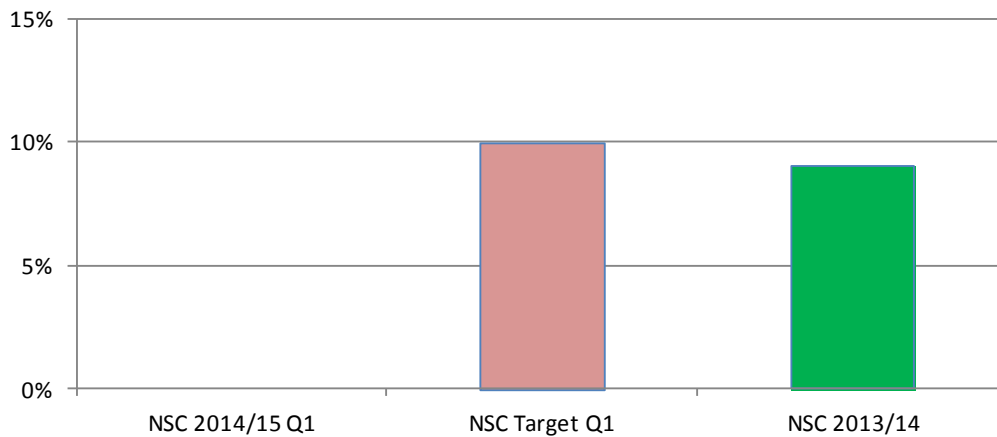
	NSC 2014/15 Q1	NSC Target Q1	NSC Target 2014/15	NSC 2013/14	Statistical Neighbour LAs average 2013/14 *	England 2013/14 *	Met target?
Number of Children Looked After	229	216	210	217			N
The percentage of children becoming subject to a child protection plan for the second or subsequent time, within 2 years of the first plan end date.	0.0%	10.0%	<= 10%	9.0%	N/A	N/A	Y
The percentage of child protection referrals of children made within 12 months of a previous child protection referral	5.6%	9.0%	<= 9%	11.3%	local indicator	local indicator	Y
The percentage of 17 year olds who are participating in education (including part-time) or work-based learning.	94.9%	94.0%	>= 96%	94.6%	84.1%	85%	Y

* - The SN and England averages for the indicator on participation in education or part-time learning are from 2012.

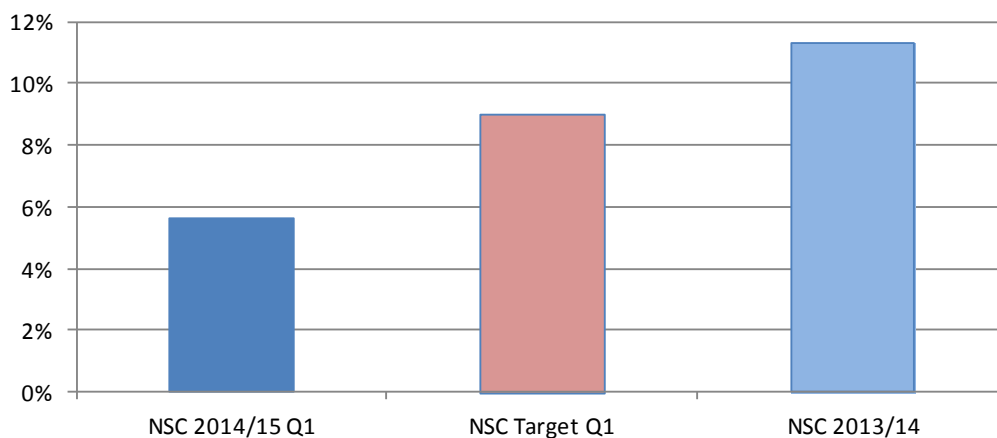
Number of Children Looked After



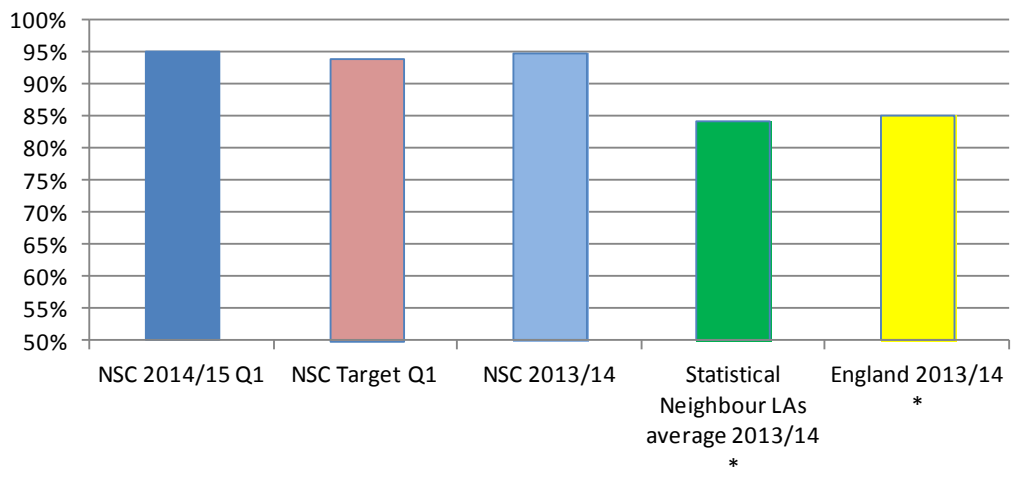
The percentage of children becoming subject to a child protection plan for the second or subsequent time, within 2 years of the first plan end date.



The percentage of child protection referrals of children made within 12 months of a previous child protection referral



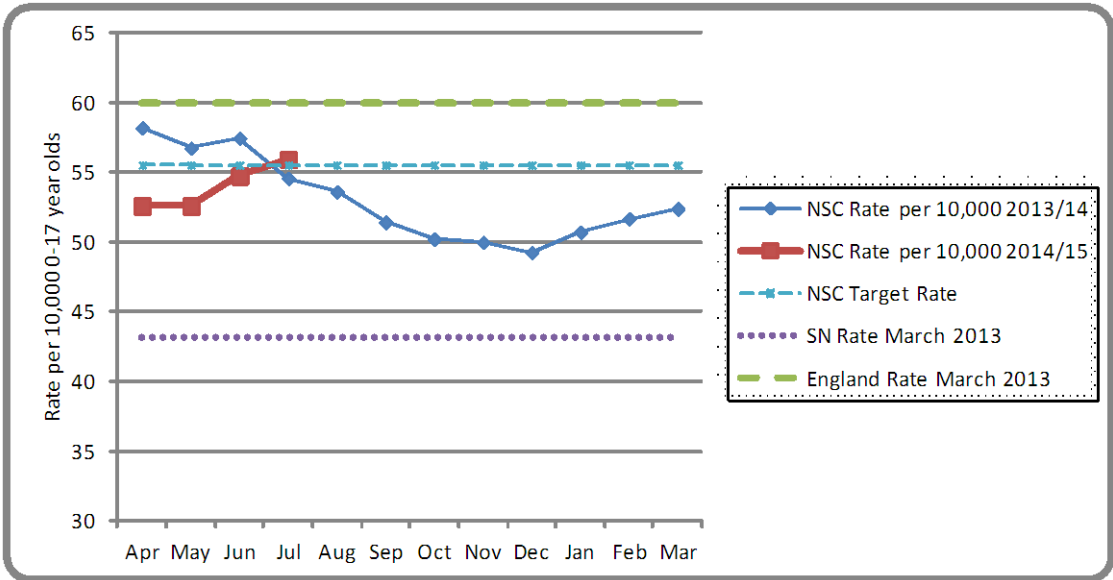
The percentage of 17 year olds who are participating in education (including part-time) or work-based learning.



APPENDIX 3 : TRENDS IN NUMBERS OF CHILDREN LOOKED AFTER, CHILDREN IN NEED AND CHILDREN WITH A CHILD PROTECTION PLAN

Number of children who are Looked After and rate per 10,000 0-17 year olds with comparators

Month	2013/14		2014/15		
	No. CLA	Rate per 10,000	No. CLA	Rate per 10,000	Target No.
Apr	241	58.2	220	52.6	210
May	235	56.8	220	52.6	210
Jun	238	57.5	229	54.8	210
Jul	226	54.6	234	56.0	210
Aug	222	53.6			210
Sep	213	51.4			210
Oct	208	50.2			210
Nov	207	50.0			210
Dec	204	49.3			210
Jan	210	50.7			210
Feb	214	51.7			210
Mar	217	52.4			210

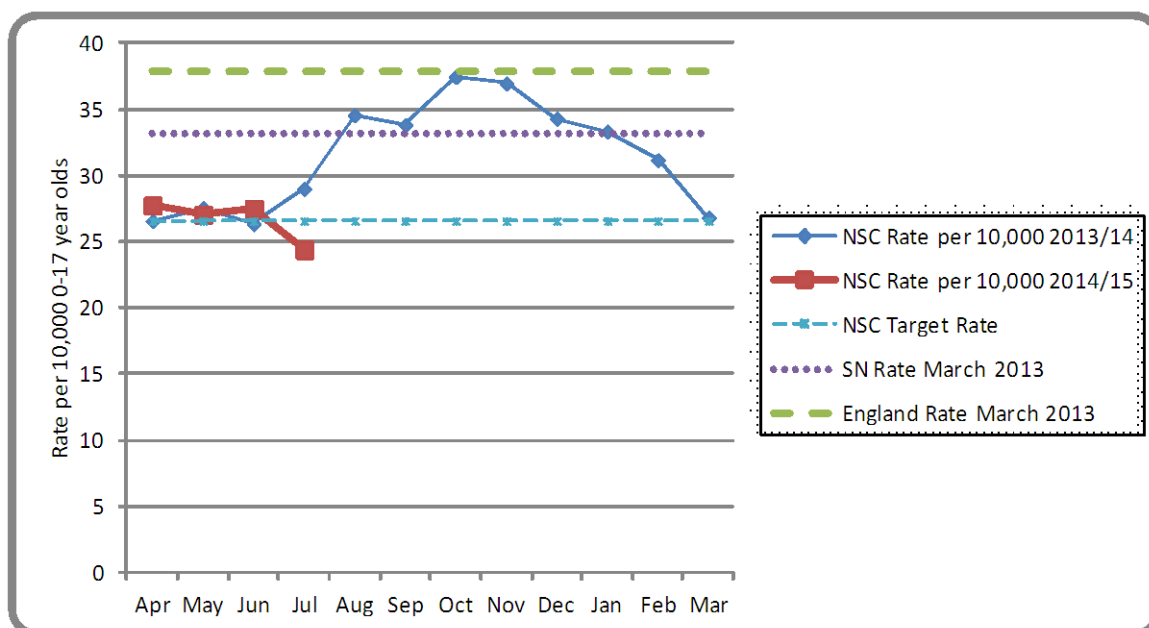


The number of North Somerset CLA has decreased significantly since December 2012 and at the end of the most recent month was close to the NSC target. The rate per 10,000 0-17 year olds in North Somerset was also below the March 2013 England average of 60, but had increased throughout the fourth quarter of 2013/14. The current North Somerset rate is higher than the March 2013 average for the Statistical Neighbour local authorities which was 43.2 per 10,000. Actions are being employed within the Support and Safeguarding Branch to control the numbers of Children Looked After.

Key: SN - Average of Statistical Neighbour local authorities, which are the 10 most similar to NSC.
Note: The figures are a snapshot at the end of the month. March 2014 is provisional
 The chart's rate axis does not start at zero

Number of children with a Child Protection Plan and rate per 10,000 0-17 year olds with comparators

Month	2013/14		2014/15		
	No. with CP Plan	Rate per 10,000	No. with CP Plan	Rate per 10,000	Target No.
Apr	110	26.6	116	27.7	110
May	114	27.5	113	27.0	110
Jun	109	26.3	115	27.5	110
Jul	120	29.0	102	24.4	110
Aug	143	34.5			110
Sep	140	33.8			110
Oct	155	37.4			110
Nov	153	37.0			110
Dec	142	34.3			110
Jan	138	33.3			110
Feb	129	31.2			110
Mar	111	26.8			110



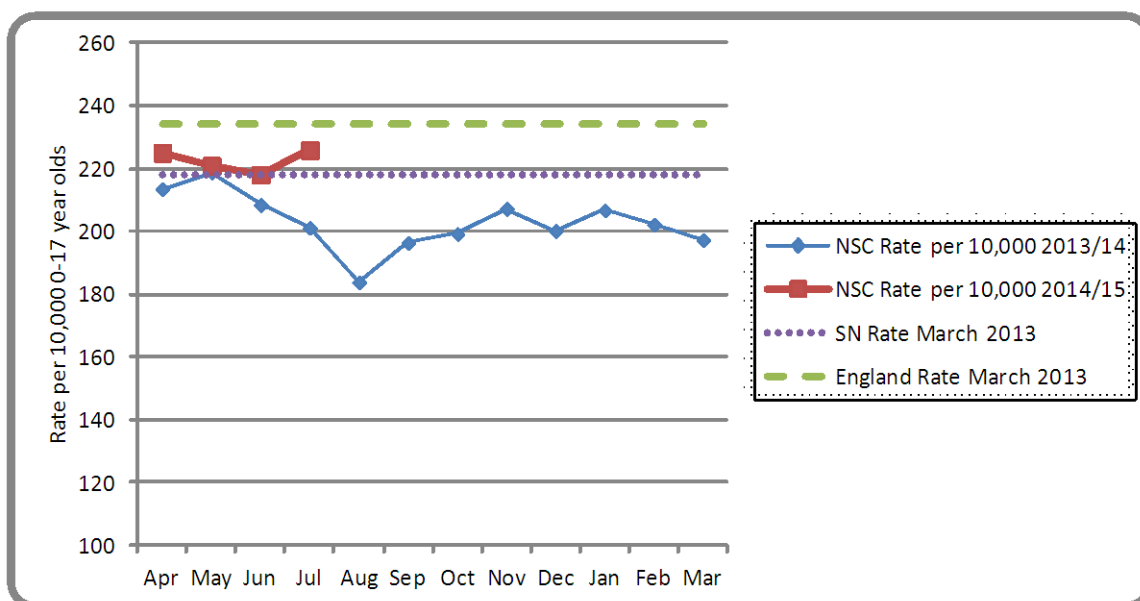
There was a large rise in the number of children with a Child Protection Plan through the second half of 2013. There was then a decrease from November 2013, with numbers having been relatively static since March 2014 at below the average rate for North Somerset's Statistical Neighbour local authorities. The figure is close to the target for 2014/15..

After a period of relative stability in CP numbers there may be some correction following a significant reduction in the rate of children becoming looked after. Chairs will monitor to ensure that children meet threshold, that children are appropriately subject to plans and that there is timely, safe discharge from plans

Key: SN - Average of Statistical Neighbour local authorities, which are the 10 most similar to NSC.
Note: The figures are a snapshot at the end of the month.

Number of Children in Need (excluding CP & CLA) and rate per 10,000 0-17 year olds with comparators

	2013/14		2014/15	
	Month	No. CiN	Rate per 10,000	No. CiN
Apr	842	213.5	941	225.0
May	817	218.8	924	221.0
Jun	853	208.4	912	218.1
Jul	847	201.2	945	226.0
Aug	791	183.8		
Sep	778	196.4		
Oct	803	199.3		
Nov	830	207.2		
Dec	826	200.2		
Jan	842	206.8		
Feb	811	202.2		
Mar	878	197.3		




This information excludes those children who were subject to a Child Protection Plan or who were Looked After. Data cleaning was carried out during Summer 2012 which closed off cases that had been left open on ICS in error, some for a considerable period. The rates of Children in Need per 10,000 0-17 year olds are close to the average of Statistical Neighbour local authorities. No target is set for the number of Children in Need.

Key: SN - Average of Statistical Neighbour local authorities, which are the 10 most similar to NSC.

Note: The figures are a snapshot at the end of the month and may differ from those published elsewhere previously due to data cleaning that took place on ICS in July 2012.
The chart's rate axis does not start at zero

APPENDIX 4: INDICATIVE GCSE AND 'A' LEVEL RESULTS

Source: Management Information and Research Team (CYPS)

2014 North Somerset Indicative Results														
A-Level Results (colour coding compared to 2013 School or College Indicative Results)													% of 16-18 year olds achieving a Level 3 qualification	
School/College		Percentage of Results By Grade						% A*-B	% A*-C	Pass Rate % A*-E	APS per A level entry	Total no. of entries		
		A*	A	B	C	D	E							
Backwell School	2014	7.0	18.5	20.1	27.3	16.7	7.0	45.6	72.9	96.6	217.1	502	98.1	
	2013	7.7	19.3	24.6	23.9	16.6	6.0	51.5	75.4	98.0	223.1	549	99.5	
Churchill Academy and Sixth Form	2014	6.7	15.8	29.0	26.1	16.1	5.3	51.6	77.7	99.1	224.4	341	100.0	
	2013	11.3	20.5	29.4	18.4	15.1	4.7	61.1	79.5	99.4	232.6	337	98.8	
Clevedon School	2014	7.1	15.1	23.6	20.9	21.3	9.8	45.8	66.7	97.8	215.6	225	98.2	
	2013	2.4	10.6	27.4	28.8	18.8	9.6	40.4	69.2	97.6	210.3	208	100.0	
Gordano School	2014	5.6	15.2	23.8	28.8	18.6	5.8	44.6	73.4	97.8	217.7	462	97.9	
	2013	5.2	14.7	27.4	26.4	18.1	6.9	47.3	73.7	98.8	219.7	518	99.8	
Nailsea School	2014	6.4	16.1	24.2	26.7	16.1	8.9	46.6	73.3	98.3	218.9	236	94.9	
	2013	5.1	20.6	27.0	23.2	16.4	6.1	52.7	75.9	98.4	223.1	311	91.8	
St Katherine's School	2014	1.4	4.1	29.7	28.4	17.6	16.2	35.1	63.5	97.3	201.9	74	100.0	
	2013	2.1	13.8	21.3	29.8	17.0	12.8	37.2	67.0	96.8	207.1	94	100.0	
Weston College*	2014	10.8	23.6	26.0	16.6	11.1	9.5	60.5	77.0	97.6	227.7	296	100.0	
	2013	11.5	18.5	28.2	19.1	13.6	5.3	58.2	77.4	96.3	224.9	486	100.0	
North Somerset	2014	6.9	16.9	24.3	25.2	16.7	7.6	48.2	73.4	97.8	219.4	2136	98.9	
	2013	7.4	17.6	26.9	23.3	16.3	6.5	51.9	75.2	98.0	222.3	2503	99.0	
England	2014	8.3	17.7	26.2	24.3	15.0	6.5	52.2	76.5	98.0	223.4	766715	N/A	
	2013	7.9	18.9	26.5	24.3	14.9	6.2	53.3	77.6	98.7	225.5	773651	N/A	
England 2014 source (Provisional):		http://www.jcq.org.uk/examination-results/a-levels/a-as-and-aea-results-summer-2014						Key to A*-B, A*-C, A*-E & APS columns						
England 2013 source: Tables 1d & 2		https://www.gov.uk/government/statistics/a-level-and-other-level-3-results-england-2012-to-2013-revised						More than 5% points (15 APS) above 2013						
North Somerset 2013 source		figures are taken from last year's indicative results to allow for a fair comparison						Above 2013						
								Equal to 2013						
								Below 2013						
* Weston College's figures are provisional, pending a small number of additional results								More than 5% points (15 APS) below 2013						
Key: APS - Average Points Score														

2014 North Somerset Indicative Results



GCSE Results (colour coding compared to 2013 School indicative results)

School			Backwell School	Broadoak College	Churchill Academy	Clevedon School	Gordano School	Hans Price Academy	Nailsea School	Priory Community School - an Academy Trust	St Katherine's School	Worle Community School	Baytree School (Special)	Ravens-wood School (Special)	Westhaven School (Special)	North Somerset Summary	England 2013 (All Schools)
Net number of students eligible		2014	258	174	250	200	295	151	149	239	133	292	8	16	18	2,183	635,078
1	% 5+ A*-C GCSE (or equivalent) including English and Maths GCSEs	2014	81.0	41.0	70.8	54.5	67.0	47.0	60.0	69.0	51.9	53.0	0.0	0.0	5.6	60.2	N/A
		2013	62.0	48.4	69.1	62.7	65.5	40.0	47.1	74.4	50.0	50.5	0.0	0.0	0.0	57.9	58.6
		Change	19.0	-7.4	1.7	-8.2	1.5	7.0	12.9	-5.4	1.9	2.5	0.0	0.0	5.6	2.3	N/A
		Target	78.0	54.0	81.0	67.0	73.0	52.0	70.0	70.0	60.0	65.0	N/A	N/A	N/A	67.7	N/A
2	% 5+ A*-C GCSE (or equivalent) including at least English and Maths functional skills at level 2 (see footnote)	2014	81.0	41.0	70.8	54.5	67.0	47.0	60.0	69.0	51.9	53.0	0.0	0.0	5.6	60.2	N/A
		2013	62.0	51.1	69.1	62.7	65.5	40.0	47.1	74.4	50.0	50.8	0.0	0.0	0.0	58.1	N/A
3	% 5+ A*-C (or equivalent)	2014	86.0	78.0	83.6	70.5	77.0	48.0	65.0	74.1	36.9	64.0	0.0	0.0	16.7	69.6	N/A
		2013	77.9	87.4	83.2	73.1	77.8	70.7	67.8	90.2	83.3	64.0	0.0	0.0	10.0	76.5	81.1
4	% 5+ A*-G (or equivalent)	2014	100.0	94.0	98.4	99.0	97.0	79.0	91.2	97.9	98.5	93.5	0.0	0.0	38.9	94.0	N/A
		2013	98.1	96.7	93.9	96.9	98.4	92.9	97.1	99.1	94.4	95.3	0.0	0.0	20.0	95.3	90.0
5	% 1+ A*-G (or equivalent)	2014	100.0	96.0	100.0	100.0	99.0	97.0	98.7	98.7	99.2	98.0	0.0	37.5	89.0	97.9	N/A
		2013	98.4	98.4	95.4	99.5	99.4	99.3	100.0	100.0	100.0	97.6	0.0	42.9	100.0	98.1	99.6
6	% A*-C English or English Language GCSE	2014	84.0	55.0	86.0	64.0	74.0	58.0	72.5	77.8	67.7	67.5	0.0	0.0	11.1	70.7	N/A
		2013	69.0	55.5	76.7	72.0	75.6	50.7	56.3	80.8	60.5	66.3	0.0	0.0	0.0	67.2	66.0
7	% A*-C Maths GCSE	2014	91.0	49.0	75.6	71.0	80.0	56.0	77.2	77.8	62.4	68.0	0.0	0.0	11.1	71.3	N/A
		2013	73.3	62.1	76.0	76.7	72.2	49.3	69.5	79.5	59.3	60.3	0.0	0.0	10.0	68.0	71.2
8	% 2 A*-C Science, or equivalent (see footnote)	2014	91.0	51.0	60.8	63.5	60.0	13.0	52.4	87.4	42.9	53.0	0.0	0.0	16.6	59.6	N/A
		2013	83.3	70.9	62.2	63.7	60.1	15.7	56.3	89.7	43.2	43.1	0.0	0.0	10.0	60.0	N/A
9	% A*-C Modern Foreign Language (1+ full GCSE or equivalent)	2014	54.0	11.0	31.6	22.0	56.0	17.0	29.5	20.5	35.3	28.0	0.0	0.0	5.5	31.8	N/A
		2013	48.4	12.1	22.9	24.9	51.6	10.7	25.9	19.2	14.2	15.8	0.0	0.0	0.0	26.4	N/A
10	% A*-C Humanities: History or Geography - at least 1 full GCSE or equivalent (see footnote)	2014	70.0	20.0	53.2	52.0	69.0	20.0	42.3	40.2	44.4	53.0	0.0	0.0	5.6	48.6	N/A
		2013	64.0	24.7	53.8	60.6	50.9	12.9	44.3	40.6	32.7	31.0	0.0	0.0	10.0	42.9	N/A
11	% English Baccalaureate	2014	50.0	7.0	27.2	17.0	25.0	10.0	20.8	15.1	18.8	16.0	0.0	0.0	0.0	21.6	N/A
		2013	42.2	8.2	20.2	18.7	35.1	3.6	20.1	14.1	9.9	8.1	0.0	0.0	0.0	19.3	22.7
12	% 3+ Levels of Progress – English	2014	86.0	55.0	86.7	60.2	77.0	55.0	70.0	82.4	74.0	62.0	0.0	12.5	5.5	70.9	70.1
		Target	84.0	70.0	86.0	77.0	83.0	69.0	80.0	80.0	75.0	75.0	N/A	N/A	N/A	77.7	N/A
13	% 4+ Levels of Progress – English	2014	41.0	21.0	48.8	20.9	34.0	31.0	40.0	27.8	28.0	21.0	0.0	6.3	5.5	31.1	N/A
14	% 3+ Levels of Progress – Maths	2014	89.0	54.0	75.3	73.1	77.0	56.0	60.4	73.0	60.0	63.0	0.0	0.0	11.1	68.7	70.6
		Target	80.0	68.0	82.0	70.0	71.0	66.0	70.0	75.0	70.0	65.0	N/A	N/A	N/A	71.2	N/A
15	% 4+ Levels of Progress – Maths	2014	48.0	16.0	35.6	31.0	37.0	21.0	27.0	29.1	18.0	23.0	0.0	0.0	0.0	29.5	N/A
16	Average Points Score – English	2014	43.6	38.2	44.8	39.9	41.0	35.3	42.0	41.8	40.4	38.6	0.0	0.0	16.2	40.2	40.5
17	Average Points Score – Maths	2014	44.7	34.6	41.6	40.2	41.0	31.2	40.0	39.3	34.7	38.3	0.0	0.0	15.6	38.6	40.1
18	Average Capped Points Score (Best 8 incl. English & Maths)	2014	363.0	N/A	349.0	325.9	339.0	240.7	306.1	327.0	N/A	N/A	0.0	0.0	N/A	N/A	338.1
19	Average Total Points Score	2014	463.0	422.0	449.0	398.5	439.0	257.8	332.3	423.0	408.0	344.0	0.0	0.0	214.2	395.1	455.3

Key	
More than 5% points above 2013	
Above 2013	
Below 2013	
More than 5% points below 2013	

Notes														
2	pupils must have achieved English and Maths GCSEs or Level 2 Functional Skills in English / Communication / Literacy and Maths / Application of Number / Numeracy													
8	This is not equivalent to the science element of the English Baccalaureate, which requires getting A*-C in both Core and Additional science, or to study all three single sciences and getting A*-C in two of them.													
SUPP	Suppressed publication of all figures relating to a cohort of 5 pupils or fewer													http://www.education.gov.uk/schools/performance/secondary_11/Publication_of_small_numbers_in_Perf_Tables.pdf
Data sources														
	2013 North Somerset and schools data													figures are taken from last year's indicative results
	2013 National data - DfE Performance Tables at July 2014													http://www.education.gov.uk/schools/performance/download_data.html
	England APS English & Maths - RAISEonline table 4.1.11													2013 anonymised Key Stage 4 unvalidated summary report
	English Baccalaureate subject lists													http://www.education.gov.uk/schools/performance/secondary_11/English_Baccalaureate_list_of_qualifications_Apr_2012.xls
	England 2014 figures not available until October 2014													